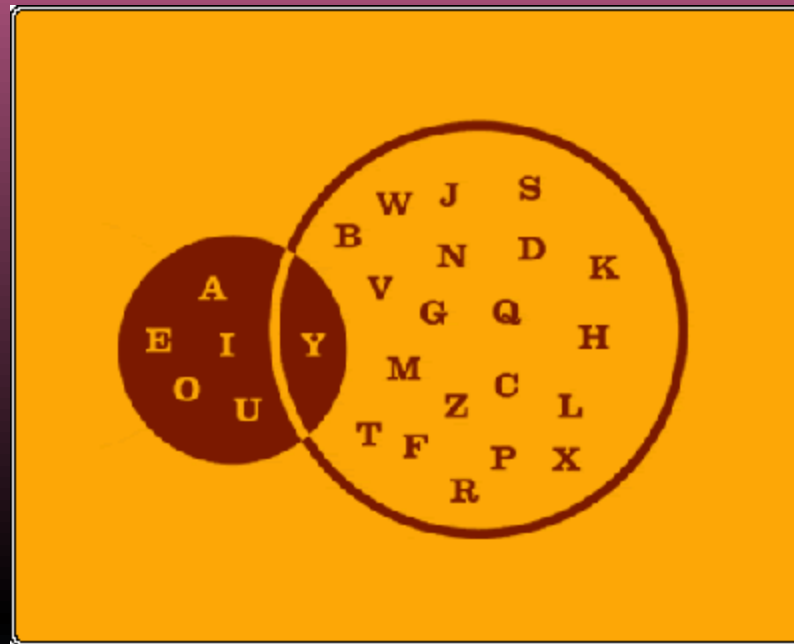


VOWELS AND CONSONANTS



By: Brittany Wahila

What is the difference?

- A, E, I, O, U, and sometimes Y
- Open sound
- Usually found in the middle of words
- We are what?
- Some examples are B, C, F, G, D, Z...
- Closed sound
- There will be more than one in a word in most cases.
- We are what?



- Back to What's the difference
- What's Next?

WE ARE VOWELS!!



- Back to What's the difference?
- What's Next?

WE ARE CONSONANTS !!

Long and Short Vowels...You'll have to sound them out!

- A- apple



- E- egg



- I- igloo



- O- office



- U- under

- Y- yellow

- Am I short or long?

- A- ape



- E- need

- I- lie

- O- code

- U- use

- Y is not included

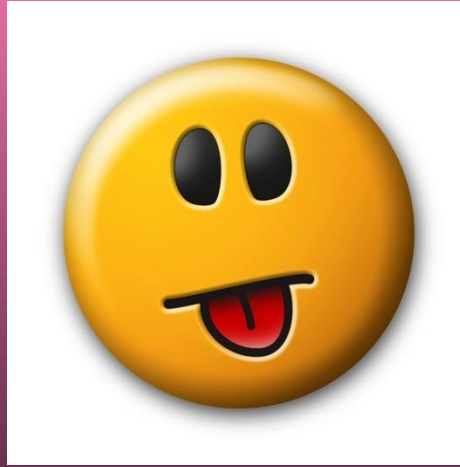
- Am I short or long?



Were you right?

What's next?


I'M LONG!




Were you right?

What's next?

I'M A SHORT VOWEL SOUND!



Now that we have the basic idea of vowels and consonants...Let's test our skills!

- Read each word aloud on the next page to determine which parts of the word are vowels and which are consonants.
 - Then decide which words have long vowels and which words have short vowels.
 - We will now do this as a class!
- 


Let the fun begin!

- Badge Fly
- Song Puppy
- leap jump
- Fact zoom
- Paddle kite
- We worm
- Right dance
- Zip ready



Some of those were tricky!

Why?

- Let's learn some rules that can teach us why certain words sound and look the way they do.
 - Why are some vowels harder to determine if they are long or short?
 - Some vowels are easy to determine because they are in the beginning of words, but others have tricky rules that make them harder to notice.
- 

Rules about long vowels

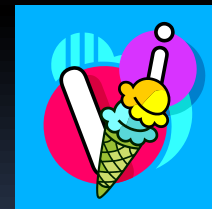
- When two vowels are together such as a double o(oo), the long vowel sound u is used. This can also be used with (ee) to make the long vowel e sound and so on.
- Another rule with long vowel sounds is in most cases when there is an e at the end of a word the vowel in the middle of the word will have a long vowel sound.

More long vowels...

- You also use the long vowel sound when using words with (ea) to make the long e sound or the long a sound depending on the word. In this case you may have to look at the word as a whole to determine which long vowel sound is being used.
- You might also see the use of gh to represent any long vowel sound when it is placed after a vowel.
Ex)fight
- Finally the use of (ai) represents the long a vowel sound.

Let's see if we can recognize
which long vowel sound is being
used...

- Lean
- Page
- Paid
- Made
- Fright
- Bake
- Lay





Are you a vowel and consonant expert?

**NOW...LET'S TEST HOW MUCH
YOU'VE LEARNED...**



1 2 3 4 5 6 7 8 9 10

Blue Boat 1

Green Boat 2

Orange Boat 3

Purple Boat 4

Red Boat 5

Yellow Boat 6

game

IS Y A VOWEL OR A
CONSONANT?

- Pain
- Asked

game

WHICH IS THE WORD WITH THE
LONG VOWEL?



Banana

game



**NAME THE VOWEL AND
CONSONANT IN THE FOLLOWING
WORD.**

game

NAME A LONG VOWEL RULE.



Learn

game



IS THE FOLLOWING WORD A
LONG OR SHORT VOWEL?



game

NAME ALL THE VOWELS.



game

NAME ALL THE CONSONANTS.



The word **bike** has a short vowel.

game



TRUE OR FALSE?



game



WHY DO LONG VOWELS HAVE
RULES?



game

WHAT IS THE DIFFERENCE
BETWEEN CONSONANTS AND
VOWELS?